

State of Wyoming Corner Record

(In compliance with the CORNER PERPETUATION AND FILING ACT, Wyoming Statutes, 1997, Section 33-29-140, et. seq. and the Rules and Regulations of the Board of Registration for Professional Engineers and Professional Land Surveyors)

Reverse side of this form may be used if more space is needed.

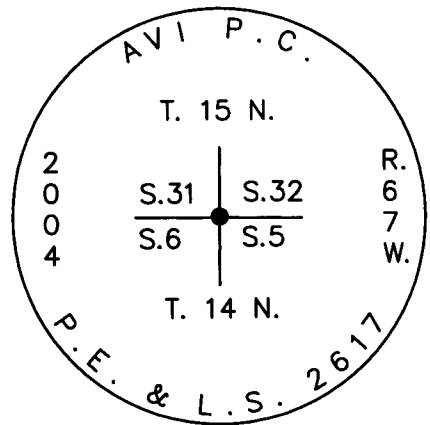
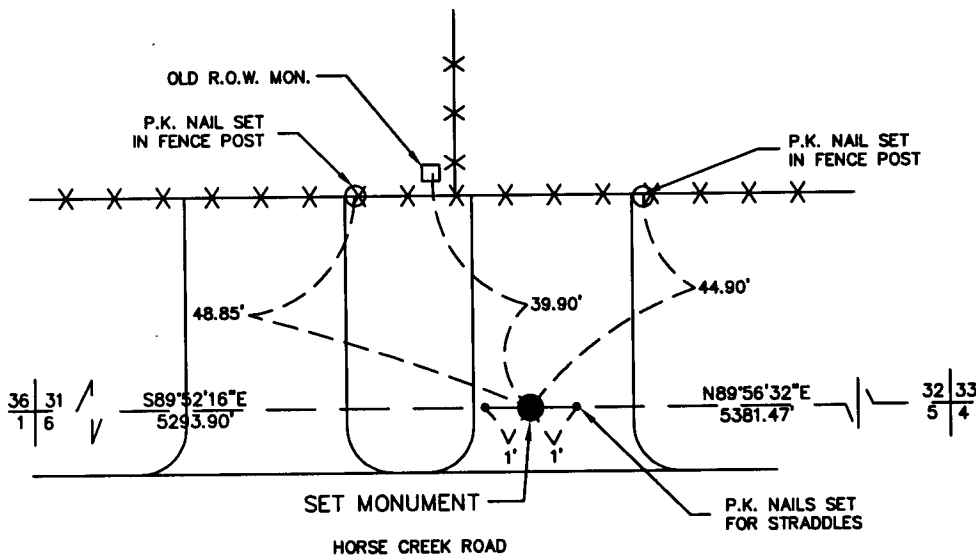
Record of original survey and citation of source of historical information (if corner is lost or obliterated). Description of corner monumentation evidence found and/or monument and accessories established to perpetuate the location of this corner. Sketch of relative location of monument, accessories, and reference points with course and distance to adjacent corner(s) (if determined in this survey). Method and rationale for reestablishment of lost or obliterated corner.

FOUND: Nothing on 12/98

G.L.O. RECORD: Granite Stone 16" x 12" x 6"

SET: Set 3 1/4" dia. Aluminum Cap on #5 x 24" rebar 4-6" under asphalt & core placed on top. Per record data on quarter circle five subdivision. Corner position was established or re-established during a pre-construction boundary survey completed 6/99 for WYDOT under Job No. CMU-1100(15) & CMW-211(5) with a Project Scale Factor of 1.000360959, using a pre-determined coordinated system provided by WYDOT to determine coordinate positions. Map of Survey recorded 6/99.

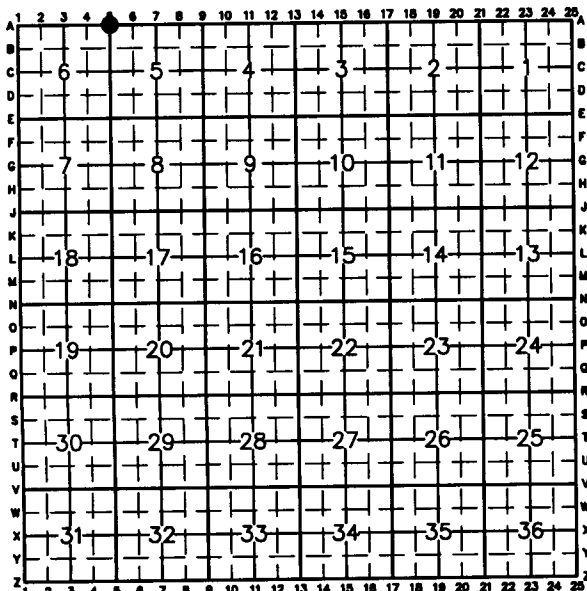
REFERENCES: Set as shown



SET MONUMENT DETAIL

Date of Field Work: 5-04 Office Reference: 2-2475.03

CROSS INDEX DIAGRAM



Firm/Agency, Address

James D. Voeller, P.E./P.L.S.

A.V.I., p.c.

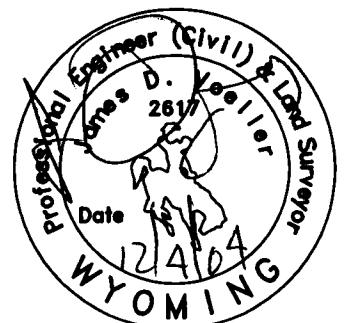
2035 Westland Road

Cheyenne, WY 82001

Telephone Number: (307) 637-6017

This corner record was prepared by Craig M. Cowley under my direction and supervision.

SEAL & SIGNATURE



RECORDED 12/08/2004 AT 2:05 PM REC# 404486 K# 1852 PG# 1697
DEBRA K. LATHROP, CLERK OF LARAMIE COUNTY, WY PAGE 1 OF 1

Corner Name: SECTION CORNER Section: 31/32 15N
6/5 T.14N R.67W; 6th P.M. Cross-Index No.: A-5
SBRPEPLS/PLSW: March 1994